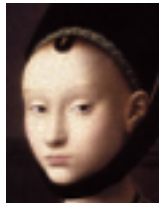


AQA exam style question 3: **Compare the Black Death in the Middle Ages with the cholera epidemics in the 19th century. In what ways were they similar? Explain your answer with reference to both epidemics.**

(8 marks) *Question taken from AQA Specimen Mark Scheme GCSE History 2018



This question asks you to find **similarities** between epidemics that broke out in two separate periods of history: the **Middle Ages** and the **19th century**.

Imagine that the examiner knows **absolutely nothing** about these epidemics, so it is up to **you** to **explain** the similarities and back up your explanation with **evidence**.

Open your exercise book and/or textbook at the section on the **Black Death** to remind you of that epidemic.

Use the images below, taken in Thackray Museum's 1842 Street, to remind you of the **cholera epidemics** that hit Britain in the **19th century**.

Identify and explain **three ways** in which the Black Death and cholera were similar.

Useful sentence starters:

Hospitals in the 19th and 20th centuries were different because...

19th century hospitals were... whereas 20th century hospitals were...

In contrast to 19th century hospitals, 20th century hospitals had...

Unlike 20th century hospitals, 19th century hospitals were...

AQA exam style question 3: **Compare the Black Death in the Middle Ages with the cholera epidemics in the 19th century. In what ways were they similar? Explain your answer with reference to both epidemics.**

(8 marks) *Question taken from AQA Specimen Mark Scheme GCSE History 2018

Example 1



Example 2



Example 3